



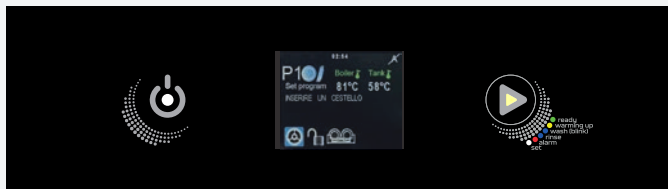
the advanced range

Intelligent tech. Sustainable power.

TopTech Plus is the consistent evolution of the proven TopTech range - offering noticeable improvements in performance, user comfort, and sustainability.

This product range combines advanced technology with high efficiency, providing a reliable and powerful solution for professional users. TopTech Plus stands for a well-balanced combination of quality, functionality, and intuitive operation

– making it the smart choice for modern kitchens that value performance without compromise.



The new **TopTouch** user interface offers 23 selectable programs for maximum flexibility and features an intuitive configuration concept.

Frequently used settings can be accessed quickly via the favorites screen function. The clear graphical display shows the progress of the wash cycle, while extensive customization options allow for full personalization.

With a practical screen lock function, integrated Wi-Fi, and a TFT touchscreen with RGB button, you're always in full control.

Point monitors the machine status through color-coded LEDs, and the robust, scratch-resistant synthetic glass front panel combines durability with elegant design.

Intelligent Functions & Advanced Technologies	44-33 D	44-33 TD	44W-33 D
DuoFlow - Proven Pump System – More Efficiency, Less Noise	■	■	■
QuickReady - Energy management system for reduced heat-up time and a faster start-up process.	■	■	■
ProRinse - Constant water pressure for perfect wash results.	■	■	■
EvoLution₃ - Clean Water for Better Washing Results	■	■	■
ProDrain₄ - Optimized Filtration for Maximum Efficiency.	■	■	■
UltraRinse₃ - Perfect wash results with minimal water consumption.	■	■	■
EnergySaving - Optimized Energy Usage	■	■	■
HiTech - Innovative wash arm for maximum performance.	■	■	■
Inspect - Clear View for Maximum Hygiene	■	■	■
SmartClean - Self-Cleaning Design for Effortless Operation	■	■	■
ProSoft - Gentle Wash Start for Maximum Care	■	■	■
WaterMaster - Glasswasher Machines with Integrated Reverse Osmosis System			■
ProDose - Precise dosing for optimal wash results.	■	■	■
CareFree - Continuous water softening for maximum protection.		■	

Dimensions and Weights		44	44W
Installation size (W x D x H)	mm	466 x 556 x 705	466 x 556 x 825
Rack size	mm	400 x 400	
Loading height	mm	320	
Maximum plate diameter	mm	320	
Maximum glass height	mm	300	
Compatible with GN 1/1 containers		no	
Compatible with 60 x 40 boxes or trays		no	
Gross weight / Net weight	kg	34 / 31	54 / 51
Packaging dimensions (W x D x H)	mm	660 x 560 x 870	660 x 560 x 870
Volume (packaged)	m ³	0,32	0,32

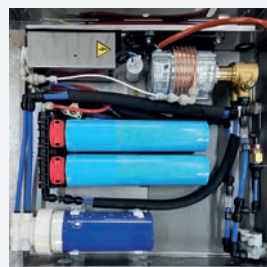
Essential Information		44-33 D	44-33 TD	44W-33 D
Theoretical capacity*	racks/h	40		
Waterconsumption / rack**	l	1,5		
Connected load (standard)	W	3.200		
Electrical connection (standard)	V	230/50/1N		
Fuse protection (standard)	amp	16		
Inlet water flow pressure min. – max.	bar	0,5 - 6,0		
Inlet water temperature min. – max.	°C	50 - 60	15 - 25	

*Calculated based on standard program 90°

**Calculated based on wash program PR2

Tech Specs		
Tank volume	l	8
Boiler volume	l	2,6
Tank heating	W	2.000
Boiler heating	W	3.000
Wash pump	W	200
Rinse pump	W	200
Drain pump	W	40
Heat emission latent / sensible	kW	0,2 / 0,2
Steam output	kg/h	0,3
Noise level	dB	59
Water connection		3/4"
Drain hose // inner / outer Ø	mm	2.000 // 18/24
Detergent / rinse aid hose	mm	1.900 / 1.900

*Technical data is non-binding - valid only as of the specified date and time: 10.06.2025 - 14:32.



EUROTEC s.r.l. divisione COLGED
Via Romana 6
55011 Altopascio (LU)
ITALY
www.colged.it

EUROTEC S.R.L.
Viale Europa 24 –
37045 San Pietro di Legnago (VR) Italy
CAP.SOC. Euro 6.456.000,00 I.V. – REG.IMP.VR NR 32820/2015 . R.E.A. VR-281824 –
P.IVA-C.F. – VAT IT 12073160157
GM: Cristina Antoniazzi